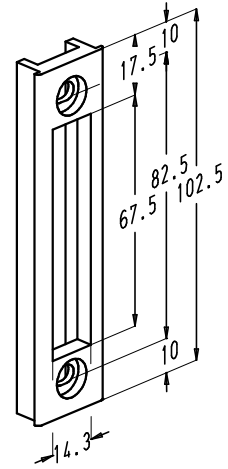
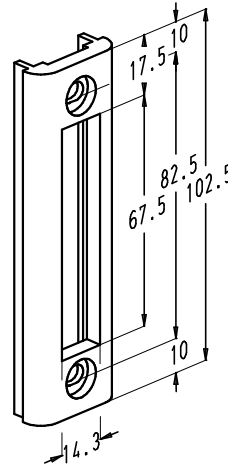
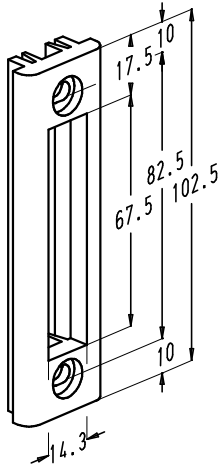


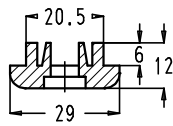


ENKELSLOTEN REEKS 8000

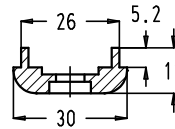
2.3. Voor sloten met alleen nachtschieter



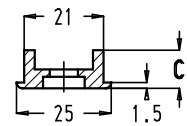
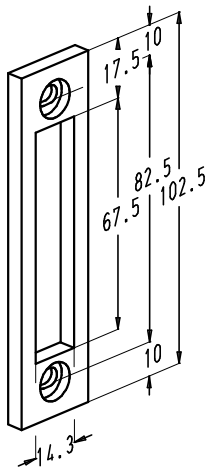
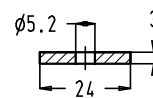
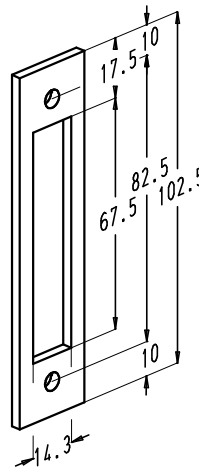
Bestelnr.	C (mm)
894-2	10
895-2	8,7



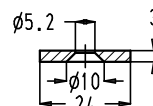
nr. 891-2



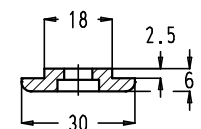
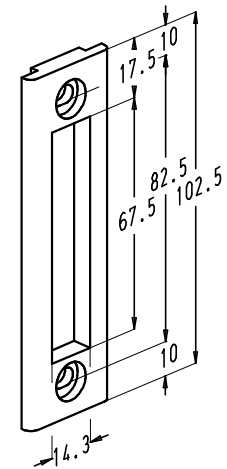
nr. 893-2

nr. 894-2
nr. 895-2nr. 896 ,B,C,D-2
nr. 898 ,B,C-2

nr. 897-2



nr. 897B-2

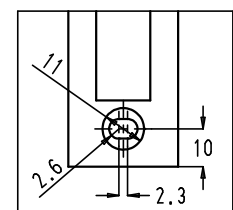


nr. 898D-2

Bestelnr.	A (mm)	B (mm)	C (mm)
896-2	25	12,5	5
896B-2	22	11	5
896C-2	20	10	5
896D-2	20	10	5
898-2	30	15	6
898B-2	30	15	6
898C-2	29	14,5	6

• Opmerkingen:

- Sluitplaat nr. 896D-2 wordt geleverd met 2 rondsels $\varnothing 10 \times 10$.
- Sluitplaat nr. 898B-2 wordt geleverd met 2 rondsels $\varnothing 10 \times 5$.
- Sluitplaat nr. 898D-2 wordt geleverd met 2 rondsels $\varnothing 10 \times 2,5$.



Bevestigingsgaten met een horizontaal regelbereik van 2,3 mm.